

hello

KINGSBRIDGE

SOUTH HAMS

GUIDED WALKS • FAMILY FUN IDEAS • FOOD, DRINK & LOCAL FLAVOURS • HIGHLIGHTS • HISTORIC KINGSBRIDGE • TOWN MAP & SCENIC WALK • WHAT'S ON • EXPLORE THE AREA • THE BEST BEACHES • WATER ADVENTURES

01548 853195 • hellokingsbridge.co.uk • The Quay, Kingsbridge TQ7 1HS

ESTUARY GATEWAY

Nestled at the head of the Kingsbridge Estuary in the South Hams district of Devon, Kingsbridge is a vibrant town that serves as a hub for the surrounding countryside. With its winding streets, independent shops and strong sense of community, it is both a popular destination for visitors and a cherished home for residents.

The town's location makes it a gateway to the South Hams, offering easy access to nearby coastal villages, beaches and the rolling Devon countryside. Whether enjoying waterside walks, local markets, or the relaxed pace of everyday life, Kingsbridge offers a distinctive blend of natural beauty, heritage and modern rural living

HIGHLIGHTS ★

- ★ Browse the many stylish and independently owned shops for gifts, antiques and local foods.
- ★ Catch the **Kingsbridge Salcombe Ferry** which offers a scenic and leisurely way to discover the stunning Kingsbridge Estuary.
- ★ Climb aboard the **Kingsbridge & District Light Railway Co. (KDLR)**, a solar-powered miniature train along the scenic water's edge.
- ★ A peaceful, volunteer-run green space tucked just off the top of Fore Street, **Kingsbridge Community Garden** is a true hidden gem. The garden offers a tranquil place to sit, picnic, explore and reconnect with nature.
- ★ Step back in time at **Kingsbridge Cookworthy Museum**, where you can learn about local history, from ancient artefacts to displays on the town's maritime and agricultural heritage.

A TIMELESS TOWN

Kingsbridge grew around a bridge built in or before the 10th century, which connected two royal estates, Alvington to the west and Chillington to the east. This gave rise to the name Kyngysbrygge ("King's bridge").

MEDIEVAL DEVELOPMENT

In 1219, the Abbot of Buckfast was granted the right to hold a market here and by 1238 Kingsbridge had become a borough. The town's prosperity was closely tied to its market and trading rights.

Kingsbridge eventually merged with the neighbouring settlement of Dodbrooke, which itself had been granted market rights in 1257. Together, they formed the town we know today.

RELIGIOUS HERITAGE

The town is home to two historic parish churches, St. Edmund's, with features dating back to the 13th century and St. Thomas Becket in Dodbrooke, which boasts a beautifully preserved medieval rood screen.

INDUSTRIAL ERA

By the late 18th and 19th centuries, Kingsbridge had thriving industries including woollen manufacture, shipbuilding, tanning and coastal trade. Its exports included cider, corn, malt, slate and it hosted a large monthly cattle market.

KINGSBRIDGE TODAY

Modern Kingsbridge blends its historic character with contemporary life. The estuary remains central to its identity, offering opportunities for boating, wildlife watching and scenic walks. The town continues to celebrate its heritage through local festivals, markets and cultural events, while serving as a lively centre for shopping, dining and community life.

Kingsbridge is more than just a market town, it is a place where history, culture and natural beauty intertwine. From its medieval origins around a simple bridge to its role today as a thriving hub in South Devon, Kingsbridge's story reflects resilience, community spirit and a deep connection to its landscape.

THE GATEWAY TO THE ESTUARY, LINKING TOWN, COAST AND COUNTRYSIDE



Photo: Comerstone Photography

LET'S GO WALK ABOUT

Use the map to explore Kingsbridge and discover the town's history.

1 TOWN SQUARE

This area has long been the vibrant heart of Kingsbridge, serving as a hub for local trade since its origins as a medieval market town. Once underwater, this area thrived as ships docked to unload their cargo, bringing life and commerce to the bustling quay. Head towards the town, past the mosaics and turn left.

2 MILL STREET

Once the home of the town mills, turn right at the corner of the Hermitage Pub and up Squeezebelly Lane, to the leat that once powered them.

3 FORE STREET

Turn right and back to Fore Street where modern façades hide medieval buildings built on long narrow plots. Take the time to explore the maze of narrow passages that lead off Fore Street.

4 THE OLD TOWN HALL

Continue uphill to Kings Cinema, once the Town Hall. Note that the clock tower is missing the face visible from the old Workhouse.

5 ST EDMUNDS

Turn left into the churchyard. With roots in the 13th century, rebuilt in 1414, this unique cruciform church features Early English and Perpendicular styles, a central square tower and a spire famously damaged by lightning in 1828. Inside, visitors can admire 15th-century screens, misericord choir stalls, Victorian stained glass and a notable Flaxman memorial. Look for the inscription above the chancel door.

6 THE SHAMBLES

Return to Fore Street and find yourself in medieval Kingsbridge where butchers' stalls lined the road and a cluster of inns and taverns buzzed with local gossip before the market opened.

7 COOKWORTHY MUSEUM

This charming museum offers visitors a journey through local history, showcasing a diverse collection that includes Cookworthy's pottery, historical artefacts, and insights into the region's industrial heritage.

8 DUNCOMBE STREET

As you walk the second half of the trail look for heavy iron gates and thick iron railings all made at the Lidstone's Foundry that was once in Church Street.

9 ST THOMAS DODBROOKE

Turn left up to the church. Dedicated to St Thomas Becket, it features architectural elements from the 15th century, including late 15th-century screens, some of which have been restored

10 CHURCH STREET

Walk downhill and at the site of Dodbrooke's old sheep and cattle market turn left.

11 EBRINGTON STREET

Follow the road - either side of you remain the malthouses, where barley delivered by boat was malted ready for brewing beer. Continue on and turn right to walk through the recreation ground.

12 WAR MEMORIAL

Arrive at the road and cross over to the war memorial commemorating those from Kingsbridge who served and sacrificed during the World Wars. 150 years ago schooners, barges and fast 'fruit clippers' were built all along the waters edge.

From here you can choose to extend your walk to Britton's Field for views of the estuary or alternatively, stroll back into town and enjoy a variety of refreshments at the many charming restaurants and cafés.





harbourhouse.org.uk
01548 854708
info@harbourhouse.org.uk

Harbour House, The Promenade, Kingsbridge, TQ7 1JD




All Welcome

Harbour House is a contemporary art and wellbeing centre in Kingsbridge, South Devon. It enriches the community through art, creativity, and wellbeing. With inclusive exhibitions, performances, and workshops, it invites everyone to take part. Dedicated spaces for mindfulness, movement, and yoga offer opportunities to explore, create, and thrive.



Cherry La La

Gorgeous, Unmissable, Independent Boutique
In The Heart of Kingsbridge

Making Women Happy!

Open Monday-Saturday 10 - 5
24 Fore Street, Kingsbridge
www.cherrylala.com Instacherrylalakingsbridge



Meet Kristy Giles
Director at Bartons Solicitors

With two decades at Bartons and lifelong ties to the South Hams, I provide trusted **local insight** and clear **conveyancing expertise**. My focus is on offering a calm, reassuring experience that protects and progresses your property plans to ensure they stay on track.



01548 855991 | kjg@bartons.co.uk
www.bartons.co.uk
20 Fore Street, Kingsbridge, TQ7 1NZ

South Hams Conveyancing



PETER BETTERIDGE
YOUR BED AND SOFA EXPERT



**BEDS · MATTRESSES
BED LINEN · CHAIRS
SOFAS · FURNITURE**

WWW.BEDEXPERT.CO.UK
20 FORE ST KINGSBRIDGE
01548 853503



Toad Hall
COTTAGES

Your local holiday cottage specialist...

Whether you're after a dog-friendly break, beachside cottage or luxury family home, we're sure we have the ideal escape for you. Choose from over 1,000 cottages in fabulous coastal, waterside and rural locations throughout Kingsbridge, South Devon and beyond.



Pop into one of our local offices, visit our website or call us
www.toadhallcottages.co.uk | 01548 202020

Local Agency | Award-winning Service | Property Management Services





FARM
EQUINE
PETS



Care you
can count
on.

Your local,
independent vets.

IVYBRIDGE : 01752 892390
MODBURY : 01548 830210
KINGSBRIDGE : 01548 852766
DARTINGTON : 01803 900181



www.southmoorvets.co.uk



AA Carevan & Camping 2025/26

PARKLAND especially for grown ups

TRANQUIL PARKS

Touring, Camping and Glamping in the heart of the South Hams

Sorry, No Dogs

Open All Year - Adults Only - Onsite Shop - Private Facilities Available
Bus Stop for visiting Kingsbridge, Salcombe, Totnes and Dartmouth

Kingsbridge, Nr Salcombe, South Devon TQ7 4AF
01548 852723 / 07968 222008
www.parklandsite.co.uk enquiries@parklandsite.co.uk

PREMIER ALL SITE

hello
KINGSBRIDGE
SOUTH HAMS

Rest easy!
We've got your
stay sorted!

Discover more accommodation options on our website or scan the QR code.

Alston Farm

HOLIDAY HOMES FOR SALE

- Set in beautiful countryside
- Pitches for tents, camper vans & caravans
- Two statics available to rent
- Lovely wooded dog walk
- Children's outdoor play area
- Only a 5-minute drive to Salcombe

alstonsite.co.uk

T 07969 750229 E info@alstonsite.co.uk
Alston Farm Campsite, near Salcombe TQ7 3BJ

OPEN 15 MAR - 1 NOV

DISCOVER THE CHARMS OF SOUTH DEVON'S TOWNS & VILLAGES

Tucked between rolling countryside and a dramatic stretch of coastline, the towns and villages of South Devon offer a way of life shaped by the sea, the seasons and a strong sense of community.

From lively market towns to postcard-perfect hamlets, this corner of Devon invites you to slow down, explore winding streets and uncover stories that have been woven into the landscape for generations.



Salcombe



DARTMOUTH

A beautiful town on the banks of the River Dart with a nautical charm. On the hills above the harbour sits Britannia Royal Naval College which has been training officers for the navies of the world since the beginning of the 20th century. For fantastic views catch the bus from Kingsbridge which takes you along the coastal road.

LODDISWELL

Surrounded by rolling countryside, the village features historic buildings, including a medieval church. You'll find lots of walking by riverside, ancient woodland and beautiful countryside following the amber waters of the River Avon through classic English woodland.

MODBURY

A small Georgian town to wander around, browse the shops and eat a leisurely lunch. There are centuries of history in the town, the earliest of which is recorded in the Domesday Book.

SALCOMBE

Salcombe is an attractive town, once a major port for the fruit trade it is now a safe haven for family holidays and visiting yachtsmen. The town is full of delightful and unique shops and a short walk away is the stunning National Trust property, Overbeck's, with an exotic coastal garden and panoramic views. Get to Salcombe by ferry or bus, from Kingsbridge.

TOTNES

Totnes is home to a cosmopolitan mix of people. As one of the founders of the Transition Town movement, Totnes attracts attention from people all over the world who are interested in environmental matters and sustainability. There are many notable buildings and monuments in the town, including the museum and classic Norman motte and bailey of Totnes Castle. There is a mainline train station which is the nearest to Kingsbridge and the two towns are linked by a regular bus service.

BANTHAM, HOPE COVE & THURLESTONE



Hope Cove

BANTHAM

Bantham sits at the mouth of the 22 mile long River Avon. Bantham is now part of a large, privately owned estate of 728 acres. The estuary which includes mudflats, saltmarsh and grassland is carefully managed to protect the delicate aquatic habitats, all of which can be seen on a canoe trip with Singing Paddles. The row of white-washed traditional cob cottages are 17th century and the popular Sloop Inn dates from the 14th century.

HOPE COVE

With its clean sandy beaches and peaceful atmosphere, Hope Cove is the perfect place to relax or enjoy a family day out. It's also the place to go to see the sun setting, whether this be with a camera, glass of wine or someone special.

There is an extensive history of shipwrecks in the bay and the cannon in Hope Cove was recovered from the wreck of the Ramilies. Visit the Herzogin Cecilie cabin in The Cottage Hotel for more information and the perfect excuse for a cream tea on the terrace.

Crabs and lobsters remain the main catch here and The Lobster Pod is a bistro serving fresh fish, takeaway meals and uncooked fish to take home.

Traditionally a sleepy little fishing village. Follow the circular walk on page 29 for fabulous views of the village and surrounding coastline.

THURLESTONE

Taking its name from the 'thirled-stone', an arch-shaped rock formation just off the beach this charming village is home to Thurlestone Golf Club with its mix of links and cliff-top terrain and the four-star Thurlestone Hotel with fine dining restaurant and Voyage Spa.

Leas Foot Sands is perfect for swimming and snorkelling while a little further south is South Milton Sands, cared for by the National Trust and one of the best beaches in the area for dog walking, stand-up paddleboarding, and rockpooling. From here you can take a short walk along the Coast Path to Hope Cove.

SLAPTON, TORCROSS & BEESANDS



Torcross

SLAPTON

Slapton village is situated about half a mile from the beach and separated from the sea by the freshwater Slapton Ley. Surrounded by reedbeds, marshes and woodland habitats, Slapton Ley is one of the country's top wildlife spots and is a designated National Nature Reserve. An important staging post for wintering and passage birds including swallows, there are several bird hides dotted around the Ley. The Field Studies Centre offer a wide range of educational and recreational courses including free activities for children during the summer holidays.

Before the opening of the coast road along the shingle bank in the last century, Slapton was only accessible along the narrow and winding lanes from inland; consequently, it has almost always been a peaceful place. This peaceful existence was temporarily shattered however, in late 1943 when the area was evacuated to allow American troops to practice for the D-Day landings on the Normandy beaches. A total of 750 families and all livestock had to move out and 30,000 American troops and 16 million tons of equipment moved in. The area was mined, bounded by barbed wire and patrolled by sentries.

TORCROSS

It is in Torcross that you'll find more information on the ill-fated 'Operation Tiger' and a Sherman Tank that was dredged up from the seabed is now a memorial to the 639 American Soldiers and Sailors who died here. Stokeley Farm Shop and South Hams Brewery are just a short walk away from here and the Start Bay Inn offers amazing views and delicious fish and chips. There are two very popular caravan and camping sites here and with a regular bus service operating between Kingsbridge and Dartmouth this is the perfect spot for walkers, birdwatchers and family holidays under canvas.

BEESANDS

A small fishing village where crab, eel, mackerel and cod have always been the catch of the day. Behind the beach is the tranquil Widdicombe Ley and a short walk south along the South West Coast Path are the ruins of Hallsands. Home to over 100 people, one winter's night in 1917, an easterly gale coincided with an exceptionally high tide and caused the village to collapse into the sea. Find out more on the event by browsing the extensive range of local history books for sale in the Harbour Bookshop in Kingsbridge.

AVETON GIFFORD, BIGBURY-ON-SEA & BURGH ISLAND



Burgh Island

AVETON GIFFORD

The name relates to the River 'Avon' and Walter Giffard, William the Conqueror's Standard Bearer who, as a reward for his services, was presented with the manor of Aveton Gifford in 1100. A short walk away, on the banks of the River Avon, is South Efford nature reserve cared for by the Devon Wildlife Trust. A patchwork of saltmarsh and grazing fields, life at the reserve is governed by a tidal gate. From the bird hide here you can spot Ibis, Greenshank, Kingfishers and even otters. St Andrews Church was completed in 1250, but in 1943 the church received a direct hit in a bombing raid by German planes. It was then restored in 1957.

BIGBURY-ON-SEA

At low water it's possible to drive from Aveton Gifford, along the tidal road. Travelling this way you will pass The Oyster Shack - once an oyster farm, it now serves some of Devon's finest seafood and is the perfect place to stop for lunch. From the beautiful sandy beach that is Bigbury-on-Sea you can travel over to Burgh Island either by tidal causeway or sea tractor. The tractor can carry up to 40 people, can operate in up to seven feet of water and moves at four miles per hour.

BURGH ISLAND

Burgh Island was originally called St Michael's after a chapel which stood on the top, like St Michael's Mount. Over the years the island became known as 'Burgh' or Burrow and the chapel was replaced by a huer's hut. A huer would look out for shoals of pilchards that would set off from west of the Scilly Isles each July and August and alert the fishermen waiting on the shore.

Nowadays the Pilchard Inn is the only reminder of this, dating back to the fourteenth century it was a convenient hideout for those wishing to keep a reasonable distance between themselves and the law.

The Burgh Island Hotel was sold in 1929 to the filmmaker, Archibold Nettlefold, who created a luxury retreat in the art deco style for the wealthy. Noel Coward and Agatha Christie were just two well-known visitors and one of her novels, 'Evil Under the Sun' was set on the island.

EXPERIENCE THE TIMELESS CHARM OF THESE TOWNS AND VILLAGES ANY TIME OF THE YEAR



Totnes

WHERE HAPPINESS MEETS THE SEA

Beach holidays do wonders for our wellbeing. Swimming supports heart health, seawater is naturally beneficial for the skin plus that fresh coastal breeze can boost the immune system, ease stress and even improve sleep.

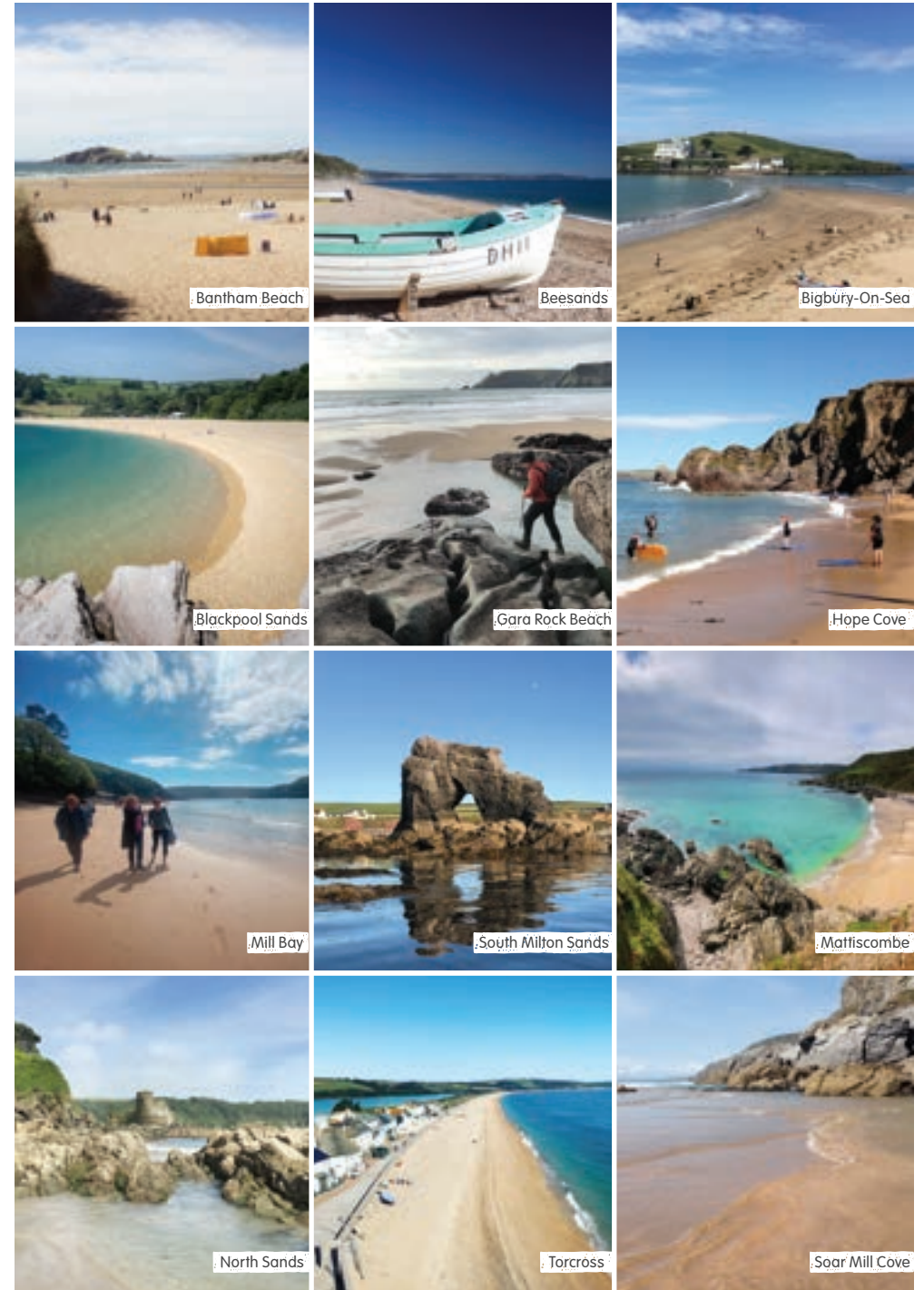
With so many local beaches, the South Hams is the perfect place to unwind, recharge and soak up a little "vitamin sea." On the following pages, you'll find details of all the beaches in the area, including facilities.



HIGHLIGHTS

Here are a few pointers to keep in mind:

- ✓ Beaches with lifeguards are always advisable. Please pay attention to the red and yellow flags and always swim between them. Don't swim alone.
- ✓ It's great practice to check the tide times before venturing out.
- ✓ Beware of rip tides as they could drag you out of your depth.
- ✓ Beware of jelly fish and weaver fish.
- ✓ On hot, sunny days, remember to bring a hat, sun cream and water.



Bantham Beach

Beesands

Bigbury-On-Sea

Blackpool Sands

Gara Rock Beach

Hope Cove

Mill Bay

South Milton Sands

Mattiscombe

North Sands

Torcross

Soar Mill Cove



Seasonal Lifeguard on Duty

Refreshments available

Dogs allowed all year

Wheelchair accessible

Suitable for swimming

Toilets (*accessible)

Watersport hire

AYRMER COVE



A remote, sandy cove managed by the National Trust. Quiet and dog friendly all year round, the beach is accessible by foot from the car park at Ringmore.

BANTHAM BEACH



The South Hams' surf beach, Bantham is known for its soft sandy dunes and scenic views of Burgh Island. Relax on the sand or get adventurous in the water. Trioceansurf is only a 10 minute drive away where you can hire a surfboard, kayak, or paddleboard. Nearby is the 14th Century **Sloop Inn** and the Bantham Village Stores and Café which overlook the Avon Estuary. Dogs are allowed on the Estuary Beach all year round and banned from the main beach from 1st May to 30th September.

BEE SANDS



A mile-long shingle beach backed by fields and a freshwater lake called Widdicombe Ley. **The Cricket Inn** is a great place to stop for a bite to eat and sample the daily catch.

KINGSBRIDGE

BIGBURY-ON-SEA



Large sandy beach with tidal causeway to Burgh Island. Take the Sea Tractor across the water at high tide, or by foot across the sands at low tide. Play on the beach, sunbathe, or surf the waves. **Venus Beach Café** and large car park available. Dog restrictions apply 1st May to 30th September between the hours of 10:00 and 19:00.

BLACKPOOL SANDS



A Blue Flag award winning beach that is popular with families. Sheltered by the cliffs, the cove has an almost tropical feel with clear turquoise waters and shingle sands. Events such as a music festival and outdoor cinema happen here during the summer months. Beach café and car park. Seasonal dog ban in place from 1st May to 30th September.

CHALLABOROUGH



A small beach with lots of local amenities. Great for rock-pooling at low tide and water sports making the beach popular with surfers. Lifeguard on duty during the summer. No dogs from 1st May to 30th September.

EAST PORTLEMOUTH/MILL BAY



A sheltered spot overlooking the Salcombe and Kingsbridge Estuary. Weave by car through back-lanes and hamlets to the National Trust car park or take the passenger ferry across the water from Salcombe. Laze on the sands watching sailing boats drift by or get active by exploring the rock pools, or splash in the shallow waters. Dogs allowed all year round.

GARA ROCK BEACH



A steep path from Gara Rock Hotel leads to the hideaway beach, nestled into the rugged cliffs. Secluded and unspoilt, the beach is a haven for sunworshippers, explorers, swimmers and four-legged friends. Gara Rock Hotel is open to non-residents for refreshments.

HOPE COVE



Nestled into the cliffs, Hope Cove is a picturesque fishing village. There are two sandy beaches here, Mouthwell Sands and Harbour Beach. Both are great spots for sunbathing, sandcastles and exploring the rockpools. The village is also served by great places to eat and drink. Check out **The Cottage Hotel** for breath-taking sea views. Dog restrictions apply on Mouthwell Sands 1st May to 30th September inclusive between the hours of 10:00 and 19:00.

LANNACOMBE



Sand and shingle beach with rock pools at low tide. There is a very small car park and the beach is accessed by a narrow lane. No facilities. Dogs allowed all year round.

LEAS FOOT SANDS



Sitting just below Thurlestone Golf Club, this small sandy beach is great for an evening swim or a spot of snorkelling. Being slightly off the beaten track, this beach doesn't have any facilities. Dogs allowed all year round.

MATTISCOMBE



Quiet, sandy beach with dramatic rock formations at low tide. Accessible by foot along the South West Coast Path, starting at Start Point.

MOTHECOMBE



Mothecombe beach is owned and maintained by the Flete Estate and open to the public every day of the year. It can be easily accessed from the beach car park on foot and with prams, via a gravel woodland path. Situated at the mouth of the Estuary, Mothecombe beach is nestled in a sheltered cove, with a freshwater stream which runs gently into the sea. Dogs are not allowed on Mothecombe Beach from 1st May to 30th September.

SALCOMBE (NORTH SANDS)



Large, flat and sandy. Great for building sandcastles and rock pooling. At high tide the beach is completely submerged so check out tide times before you go. Ice cream van and café/ restaurant available. Large car park. Dog friendly all year round.

SALCOMBE (SOUTH SANDS)



A sandy beach at the mouth of Salcombe Harbour. Accessible by passenger ferry in Salcombe. Equipment hire for water sports available by the beach. No dogs allowed between 1st May to 30th September. Above South Sands sits Overbecks, a National Trust property with tropical gardens.

SLAPTON SANDS/TORCROSS



Slapton Sands is packed with points of interest such as the natural freshwater lake (Slapton Ley) that sits opposite the beach and the American tank that sits in the village as a symbol of Slapton Sand's part in WW2. The beach itself is a long stretch of sand and shingle, facing out towards the expanse of the English Channel – perfect for sunbathing, swimming, beach games and a popular spot for fishing. Overlooking the sea is the **Start Bay Inn**, serving locally caught fish and crab. Seasonal Lifeguard on at Torcross beach.

SOAR MILL COVE



Soar Mill Cove is a sandy beach tucked into the cliff face and only accessible via the South West Coast Path or from **Soar Mill Cove Hotel**. The beach is dog friendly all year round. Refreshments are available at the hotel which is open to non-residents.

SOUTH MILTON SANDS



Managed by the National Trust and landmarked by the famous arch of Thurlestone Rock. South Milton Sands is a popular beach for families, sunbathers and water sport fans. A pop up beach café is available.

Finally, please remember pop all your litter in the bins provided. If they are full, please take your rubbish home with you and if possible, recycle.

Thank you.



All details were correct at the time of print, but may be subject to change.

GET OUT ON THE WATER

If you want to get on the water then South Devon is the perfect place. Whether it's a peaceful paddle or an exciting rib ride, there really is no better place to get wet!

There are schools to teach you how to surf, stand-up paddleboard and canoe in the estuaries, rivers and the sea. If you're already a pro then there are national competitions that take place here and new waterways to explore. If you are looking to upgrade your kit or try something new, then there are stores such as Ashby's Leisure Superstore.

Explore the estuary on a canoe safari with Singing Paddles, embrace the outdoors with Adventure South, embark on an unforgettable journey through Salcombe with Salcombe Cruises, or enjoy a day on the water with Salcombe Fishing Adventures.



DISCOVER MORE!



Kingsbridge is the perfect base for getting out onto the water. With easy access for boating, paddleboarding and kayaking, the town makes life on the water an effortless part of everyday adventure.

Scan the code to find out more ways to get out onto the water.



THE BEAUTIFUL ESTUARY

The Kingsbridge – Salcombe Estuary begins at the English Channel and winds itself up five miles to the heart of Kingsbridge. With no large river and only small streams feeding in to it, this 'ria' or drowned river valley fills up twice a day with sea water. On a spring tide the water can be as high as 5 metres above mean sea level. At low tide the exposed mudflats support an abundance of wildlife including wading birds and at the lower fringe of the foreshore the eelgrass provides a nursery habitat for seahorses.

The fish which can often be seen in the top of the estuary are grey mullet and the estuary is also a favourite spot for flounder which can be fished from the foreshore between the start of October to March. **Ashby's Leisure Superstores** have all your supplies for fishing with a wide selection of fishing tackle and accessories including rods, reels, hooks, lures and rigs. Plus with artificial, frozen and live bait all kept on site you'll never be short of something to put on your hook.

If you're paddleboarding or kayaking on the estuary look out for the distinctive arched shape lime kilns. Built in the 18th century to burn limestone, cargoes from the quarries were brought in by sea and transformed into quicklime. This was used as a dressing on the surrounding fields to reduce the acidity of the soil. There are twenty-two in total on the Kingsbridge Estuary – can you find them all?

GET CRABBING!

A truly British seaside activity – it's surprisingly addictive for adults as well as children! The Quayside in Kingsbridge is an excellent place to go crabbing and you'll have more success on an incoming tide.

All you need is a bucket, a hook-free crab line and some raw bacon. Fill your bucket with water and the net on your line with bacon. Lower your line until it reaches the bottom and, when you feel a crab taking the bait, slowly bring up your line and transfer the crab to your bucket. If the crabs start to fight, try putting some seaweed in the bucket.

It's important not to keep too many in one bucket or they will become distressed, slowly tip them back in at the water's edge.



SALCOMBE SUPERSTORE & GARDEN CENTRE

Salcombe Road, Malborough, Kingsbridge, Devon, TQ7 3BX
Tel: 01548 233109 • Email: sales@ashbysonline.co.uk

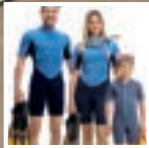


Local Produce Farm Shop
Traditional On-Site Butchery
Fresh Farm Produce • Artisan Bread
Locally Brewed & Distilled Beers, Wines & Spirits
Unique Handcrafted Devon Gifts

Blue Whale Café
Stunning Panoramic Views
Freshly-Made Breakfast, Lunch & Snacks
Fully Licensed • Open 7 Days a Week

Home & Garden
Plants • Gardening Tools & Accessories
Household Goods • Pet Products
DIY & Car Care • Coal/Gas/Logs

Leisure & Holiday Goods
Camping/Caravanning
Beach Gear
Watersports • Wetsuits
Marine Chandlery
Clothing & Footwear



KINGSBRIDGE GENERAL SUPERSTORE

Home & Garden

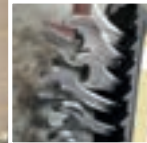
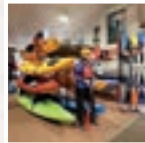
DIY Hardware & Tools • Car Care
Household & Kitchenware
Gardening Supplies
Pet Food & Accessories
Cards & Stationery
Unique Handmade Local Gifts

Leisure and Country

Camping • Tents, Sleeping Bags, Stoves & More
Caravanning & Motorhome Basics
Walking Boots, Survival Gear & Rucksacks
Fishing Tackle, Live & Frozen Bait
Pellets & Air Weapons

Watersports & Beach

Wetsuits, Rash Vests, Life Jackets & More
Kayaking & Canoeing
Surf, Paddle & Body Boards
Buckets, Spades & Games
Marine Chandlery



On Site
Jetwash



East Charleton, Kingsbridge, Devon TQ7 2AP
Tel: 01548 531625 • Email: sales@ashbysonline.co.uk

www.ashbysonline.co.uk @ashbystores

WHERE CREATIVITY MEETS COMMUNITY

In Kingsbridge, Harbour House adds a modern, intimate touch to the arts scene. With gallery exhibitions, hands-on workshops and occasional performances, it's the perfect place to discover local artists and experience the town's creative spirit up close.

The Flavel, in Dartmouth, is a beloved theatre and arts centre, hosts theatre, live music, films and workshops, offering something for every taste. Its welcoming atmosphere makes it a favourite gathering spot for locals and visitors alike.

In the heart of Kingsbridge, The Mill Club offers a welcoming atmosphere. Affiliated with the Royal British Legion but open to non-members, it hosts regular music nights, quizzes, tournaments, social events, with flexible space for parties, wakes, meetings and celebrations.

Kingsbridge Care Hub hosts community groups, activities, wellbeing classes, with two rooms available for meetings, AGMs, parties and optional outside catering.

STEP INTO THE GREAT OUTDOORS

We're proud to share what makes this corner of the South Hams so special. From its unspoilt coastline of sandy beaches, rugged cliffs and rocky outcrops to the five stunning ria estuaries, the area is rich in diverse habitats and remarkable wildlife.

Wander along ancient, winding lanes, take in the natural night skies and enjoy the iconic panoramic views that make this landscape unforgettable.

On the following pages, you'll find four of our favourite walks along with suggestions for places to explore. Perfect for discovering the beauty of the South Hams at your own pace.



The SWCP

WILD AND WONDERFUL

There are so many natural attractions to enjoy in South Devon and so many ways to do so. Whether it be a canoe safari with **Singing Paddles**, a free bat walk with Slapton Ley Field Centre or a wild swim in the Avon Estuary. Our 'Wild Map' above offers plenty of suggestions, but if you're looking for more ideas, don't hesitate to ask our friendly team at the Kingsbridge Information Centre.

GET YOUR BOOTS ON!

South Devon has some of the finest walks in Britain. The Avon Valley around Loddiswell is no exception and is home to many peaceful walks and trails. Here are some more ideas

THE RIVER RUNS WILD

The River Avon rises up on Dartmoor and meets the sea at Bantham. Accompanied by the Primrose Line in the Avon Valley, the railway that opened in 1893 and closed in 1963, follows alongside as far as Loddiswell Station, then cuts through the hills to reach Kingsbridge. Follow the walk on the page 28.

BLACKDOWN RINGS

An ancient encampment, probably at first pre-historic with the earthworks remaining of a fortress of the Danish or Anglo-Saxon period. Sitting 700ft above the sea it commands a stunning view of practically the whole of South Devon.

ANDREW'S WOOD

A Devon Wildlife Trust reserve and haven for a wonderful collection of ferns, mosses and beautiful wildflowers which thrive under the shade of the trees. A network of paths let you choose the direction to take - pack your wellies and head out for a romantic stroll.

STOP FOR A WELL-EARNED REST

With Avon Mill Garden Centre, the South Devon Chilli Farm and Aune Valley Café all offering opportunities to refuel including traditional Devon cream teas and not so traditional chilli ones - make a day of exploring this inland area often overlooked for the South West Coast Path and Dartmoor.

WALK 1



A DELIGHTFUL CIRCULAR WALK TO BOWCOMBE CREEK



Gradient ▲▲▲▲

2.75 miles / 2 hours

Circular walk only possible at low tide

1 Starting at the Kingsbridge Information Centre follow the promenade with the estuary on your right hand side.

2 Go past The Crabshell Inn avoiding the temptation to stop

for a drink and just before Britton's Field, walk down the slipway and on to the foreshore.

3 Follow the foreshore all the way around to the picnic area and stone bridge - watching your step as it can sometimes be slippery.

4 Look out for a host of waterfowl and wading birds as you follow the creek north.

5 There are two footpaths to your left, both of which lead you back in to Kingsbridge. The first runs over fields with views of the estuary and South Devon countryside.

The second path takes you along green lanes which are steeped in the trade and travel of past times.

WALK 2



A TRANQUIL CIRCULAR WALK THROUGH PARKLAND MEADOW AND DAPPLED WOODLAND TO FAR-REACHING VIEWS OVER KINGSBRIDGE



Gradient ▲▲▲▲

2 miles / 1.5 hours

To West Alvington

1 Starting at Quayside car park. By the entrance to the car park, pass to the left of the Kingsbridge Information Centre to Ilbert road. Turn left and head up the road past the filling station.

You will pass the end of a road called Ropewalk, where fibres were stretched to make rope for the vessels once built in the shipyards of Kingsbridge.

2 Cross the road above the roundabout and continue uphill. The industrial estate to your right was once Kingsbridge Railway Station bringing holidaymakers and freight to and from the area.

3 Just before a long ramp of steps, turn right down a green lane signed Norden House. By the gateway pillars, bear left along the footpath.

4 Follow the path down through the field around the edge of wood. Enter the wood where you see the stile and follow the path straight on.

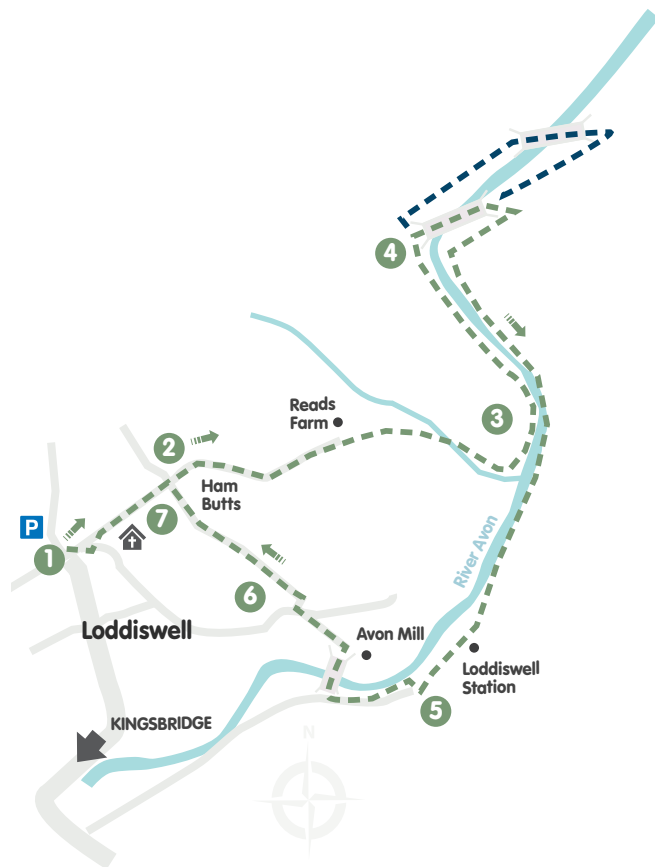
5 After 200m turn left in front of the waymarker post and follow the path up to a stile at the top edge of the wood.

Follow the green lane leading down into West Alvington.

6 Turn left along the pavement and then follow the path above the road back to Kingsbridge. Cross the road above the roundabout. Continue down past the filling station back into the centre of town.

WALK 3

A LEAFY RIVER AVON
WALK FROM LODDISWELL



Gradient ▲▲▲▲

3.5 miles / 2 hours

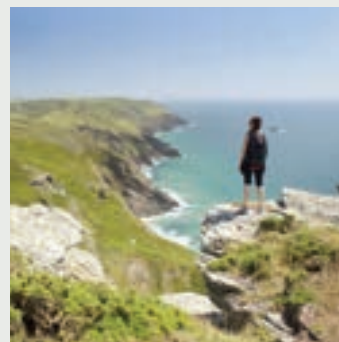
Circular walk starting 3.5 miles from Kingsbridge

- 1** Starting at Loddiswell Car Park. Turn left out of the car park and left again, then follow the tarmac lane to the left of the church.
- 2** At Ham Butts go straight on towards Reads Farm. Just before the farm, bear right onto a public footpath.
- 3** Follow the path alongside the stream and turn left at the bottom, to follow the riverside footpath.

- 4** Cross the river at the old railway bridge and turn right along the path which follows both the route of the old railway line and the river. You have an option for a slightly longer walk at this point where you can cross further up stream at the second railway bridge.
- 5** Turn right at the road, by the Loddiswell station. Follow the road right under the railway bridge then turn right onto public footpath along the river. At the road, turn right over the bridge. You will pass Avon Mill Garden Centre.
- 6** Continue on the lane up hill. At the second left hand bend, take the second right up the rough track. Fork left past the drive entrance to Cloverwell Farm.
- 7** Turn left at Ham Butts. Follow the lane past the church and back into the village. Turn right after the post office and then right again into the car park.

WALK 4

TOWERING CLIFFS WITH
STUNNING SEA VIEWS THROUGH
TO WINDING GREEN LANES



Gradient ▲▲▲▲

5 miles / 3 hours

Circular walk starting from the picturesque Hope Cove

- 1** Starting at Hope Cove Car Park. Turn left out of the car park and follow the lane through the village. This becomes a path and then a road again down into Inner Hope.
- 2** By the slipway, follow the coast path up the steps. Follow the waymarked path, which snakes around Bolt Tail and past Oceans Restaurant.
- 3** At Bolberry Down turn down the lane. At the next T-junction, turn left, then just around the corner fork right.
- 4** Drop down the hill, up the other side of the dip and turn left onto the green lane signed 'Sweethearts Lane'.
- 5** At the next junction turn left, signed 'Public Footpath Galmpton 1/2 mile'. Then the path cuts off to the right by the gateway to Higher Barton, signed 'Public Footpath, Galmpton 3/4 mile' and runs up across one small field and right along the field margin of the next.
- 6** Pass through the gate and turn left over the stone stile by the tall waymarker post and follow the field edge footpath back to Hope Cove.
- 7** Cross the road and follow the path down steps by the side of St Clements Church, then turn right and return through Hope Cove to the car park.

FAMILY FUN IN THE SOUTH HAMS

Kingsbridge and its surroundings are full of opportunities for unforgettable family adventures, providing the perfect setting for creating cherished memories.

From scenic coastal walks and sandy beaches to welcoming attractions and hands-on experiences, there's something to delight every generation.

Whether you're planning a relaxed day out or an action-packed adventure, the area offers endless ways for families to explore, connect and enjoy quality time together, whatever the season.

For more information, visit our website, give us a call, or pop in to see us. With so much to discover, family fun awaits!



Beaches & Coastal Adventures

Enjoy golden sands, gentle waves and breathtaking views at Bantham, Thurlestone, Blackpool Sands and South Milton Sands. Build sandcastles, explore rock pools, or try family-friendly water sports.

Scenic Walks & Outdoor Exploration

From dramatic stretches of the South West Coast Path to peaceful countryside trails, the South Hams is perfect for families who love to explore. Discover hidden coves, wildlife-rich estuaries and picture-perfect picnic spots along the way.

Towns & Local Discoveries

Wander through Kingsbridge, Salcombe, Dartmouth and Totnes to discover independent shops, cafés, ice cream stops and bustling markets. Throughout the year, enjoy seasonal events, festivals and community celebrations.

Food, Picnics & Treats

Pick up fresh local produce from farm shops and delis, enjoy fish and chips by the water, or relax in family-friendly cafés and restaurants with stunning views. A seaside picnic is always a winner.

ALL-WEATHER HIGHLIGHTS IN KINGSBRIDGE & THE SOUTH HAMS

INDOOR FUN IN KINGSBRIDGE

Taylored Games

A haven for board-game lovers of all ages. Explore shelves of games, join in-store sessions, or pick up something new for cosy family evenings.

Paper Bird Island

Get creative with pottery painting, crafts and hands-on art activities. Perfect for rainy days, birthday treats, or relaxed family time.

Quayside Leisure Centre

Enjoy swimming, sports and active fun for all ages. A great option for burning off energy whatever the weather.

Kings Cinema

Settle in for the latest films in this friendly, independent cinema—ideal for a relaxed afternoon or evening out.

Cookworthy Museum

Step into Kingsbridge's past with engaging displays, local stories and fascinating artefacts. A brilliant way to learn about the heritage of the South Hams.

FURTHER AFIELD! GREAT DAYS OUT IN ANY WEATHER



The Flavel Arts Centre, Dartmouth

A vibrant hub for theatre, film, exhibitions, workshops and live performances. A cultural treat for families looking for something a little different.

Babbacombe Model Village

A magical miniature world with beautifully crafted scenes, gardens and seasonal illuminations. A delight for children and adults alike.

Babbacombe Theatre

Enjoy family-friendly shows, comedy, music, and variety performances in one of the UK's longest-running theatres.

Pennywell Farm

A much-loved family attraction offering indoor animal encounters, shows and hands-on activities. Meet friendly animals, enjoy rides, and make memories whatever the weather.

A TASTE OF THE SOUTH HAMS

When it comes to food and drink, we're proud to champion the very best our region has to offer. The South Hams is alive with talented, passionate makers who pour creativity and care into everything they produce. From hardworking farmers and artisan bakers to imaginative brewers and skilled butchers, our local producers form the heart of a vibrant and ever-growing culinary scene.

Many of the cafés and restaurants in Kingsbridge and the surrounding villages source ingredients from nearby suppliers, helping to reduce food miles and support sustainability across the area. Take the time to enjoy organic, locally grown fruit and vegetables, savour the exceptional freshness of our seafood and indulge in irresistible sweet treats crafted close to home.

MORE FOODIE OPTIONS

Scan the QR code for the most up to date information on food and drink options.



ROAM Restaurant

SOME OF OUR FAVOURITES

Café Asia

Kingsbridge TQ7 1ED
01548 857888

Browsing through the menu is like taking a journey across Asia itself: from the fresh, exciting flavours of Thailand and Vietnam to the rich, complex spices of Malaysia and from innovative Japanese dishes to the timeless classics of traditional Cantonese cookery.

Maha Bharat

Kingsbridge TQ7 1ED
01548 857072

A multi-award-winning Indian restaurant offers authentic, high-quality Bengali and Indian cuisine in the heart of Kingsbridge. Their secret lies in the quality herbs and spices cooked with the finest range of meats and vegetables. Eat in or take away.

Church House Inn Stokenham

Stokenham TQ7 2SZ
01548 721994

A beautifully refurbished village pub in the heart of Stokenham, just a short hop from Slapton Sands. The pub has a welcoming bar, a large dog-friendly beer garden and is under new ownership. Showcasing sustainably sourced produce, celebrating & supporting our local food. They use the finest ingredients to create freshly prepared dishes made from scratch.

The Globe Inn

Frogmore, TQ7 2NR
01548 531351

Their menus feature a variety of traditional pub favourites alongside specials that highlight the abundance of glorious local produce. All of their food is homemade, crafted with the freshest, locally sourced ingredients. They offer breakfasts, lunches and evening meals.

Twenty Seven

Kingsbridge TQ7 1ED
01548 288847

Award-winning fine dining restaurant celebrating the very best of the South Hams larder. The ethos is simple, fresh, locally sourced produce, skilfully prepared and thoughtfully presented. Dishes are served in a relaxed yet vibrant environment, making it ideal for both special occasions and memorable everyday dining.

The Blue Whale Café at Ashby's of Salcombe

Malborough TQ7 3BX
01548 233809

Offers stunning panoramic views, whether you dine on the spacious patio or indoors through large glass windows. Open daily, it serves fresh, locally sourced food from breakfast to lunch, with ample parking and convenient links by bus, bike, or foot.

Sandridge Barton Wines

Stoke Gabriel TQ9 6RL
01803 732203

A renowned wine producer situated in a sheltered valley at Lower Well Farm with vineyards on the banks of the river Dart. The winery visitor centre offers guided and self-guided wine and cheese tastings, winery tours and ROAM Restaurant, all of which can be pre-booked online. They have a small farm shop selling their range of wines, Sharpham Dairy cheeses and other local produce.

Sandridge Barton

Wine tours & tasting
Vineyard walks
Shop & Restaurant

Sandridge Barton Wines
Lower Well Farm, Stoke Gabriel,
South Devon, TQ9 6RL

Book now
sandridgebarton.com

Our Website



Thai | Malaysian | Japanese | Cantonese

Capturing the flavours of the East, Café Asia delights in bringing you freshly cooked and vibrant dishes from South East Asia.



Come and relax in our friendly family run restaurant and let your taste buds get transported half way around the globe ...

Restaurant Reservations
01548 853818

Takeaway & Delivery
01548 857888

Opening Hours
Tues-Thur & Sun 5pm-9.30pm
Fri & Sat 5pm-10pm
Closed Mondays (except Bank Holidays)

Food Drink Devon
Love the Flavour

www.thecafeasia.co.uk 10 Mill Street, Kingsbridge TQ7 1ED



Eat - Drink - Stay - Explore

Located on A379, and a five minute walk from the Frogmore Creek pontoon, The Globe Inn provides tasteful accommodation, traditional pub atmosphere, and proudly serves quality selected wines, local real ales, ciders, juices, and delicious food, seven days a week.

The bar is open all day every day, and from Monday to Saturday you can enjoy breakfasts, lunches, and evening meals. On Sundays, we serve breakfasts followed by an extended Sunday Roast service into the evening. Alongside our high-quality pub classics, we offer regularly updated seasonal specials. Takeaway meals are available, including stonebaked pizzas, and we also serve organic barista coffees.

With eight spacious bedrooms, a pool table, darts, weekly live music, there is something for everyone, with plenty of on-site parking. In the Summer our terraced beer garden offers a haven of relaxation.

The Globe Inn, Frogmore, Kingsbridge, Devon TQ7 2NR

   **01548 531351**
info@theglobeinn.co.uk
theglobeinn.co.uk



MAHABHARAT
Indian Dining
EST. 1993

Awarded Best Asian Restaurant in the South West 2024, our multi award winning restaurant offers authentic, high quality Bengali and Indian cuisine in the heart of Kingsbridge, South Hams. Established in 1993, our secret lies within the alchemy of quality herbs and spices cooked with the finest range of meats and vegetables.

www.mahabharatonline.co.uk • 7 Mill Street, Kingsbridge, Devon TQ7 1ED
01548 857072 / 856003 for table bookings / delivery / order to pick up
Open 5:30-11:30pm every day including Bank Holidays, 12-2:00pm Mon to Sat

We're here to support local business

Located on the Town Square in the heart of the town, the Kingsbridge Information Centre is perfectly positioned to connect visitors and locals with your business.

With year-round foot traffic and a prime spot during events, we're here to help you thrive. Promote your business, group, or charity with us and reach your audience effectively!

→ **WEBSITE LISTINGS** ←

LEAFLET & POSTER DISPLAYS

 **07925 129497** 
hellokingsbridge.co.uk
dawn@hellokingsbridge.co.uk
The Quay, Kingsbridge TQ7 1HS

CHURCH HOUSE STOKENHAM

IS BACK
OPEN

UNDER NEW OWNERSHIP

LET THE GOOD TIMES ROLL

FOR INFO & MENU'S, INCLUDING A COUNTRY PUB ROAST, NEAR THE COAST
WWW.CHURCHHOUSE-STOKENHAM.CO.UK
01548 721994

Devon Cove
Kingsbridge TQ7 1NY
07779 008842

Exceptional vodka using King Edward potatoes, lovingly grown on their family farm overlooking Hope Cove. Visit them at their shop and Tasting Room in Fore Street, Kingsbridge and try their range of award-winning spirits and browse the lovingly curated selection of gifts and cocktail kits.

Harbour House Kitchen
Harbour House, Promenade
TQ7 1JD
07833 992220

Harbour House Kitchen offers plenty of indoor seating and a sheltered, quiet garden right in the heart of Kingsbridge. Serving organic coffees and teas, cakes, breakfasts and lunches. A daily changing menu offers soups, salads, tarts and toasties. Children and dogs welcome.

The Creeks End Inn
Square's Quay, TQ7 1HN
01548 853434

Restaurant and bar fantastically located in the heart of Kingsbridge on the Town Square. Dog & child-friendly, open for breakfast, lunch and dinner, with the option of takeaway fish and chips.

The Crabshell Inn
Crabshell Quay,
Embankment Road, TQ7 1JZ
01548 852345

Unwind on the quayside and soak up all Kingsbridge has to offer from the perfectly positioned Crabshell Inn while enjoying a local selection of ales and seasonal dishes. With its welcoming atmosphere and waterside setting, it's an ideal spot for relaxed lunches, evening drinks, or catching up with friends as the boats drift by.

Mangetout Café and Deli
84 Fore Street, TQ7 1PP
01548 852133

Serving breakfasts, lunches and organic coffees. Food and drinks are available to takeaway, enjoy alfresco in their courtyard garden or sit inside.

South Devon Chilli Farm
Loddiswell TQ7 4DX
01548 550782

Jenny, Amrit and the team are passionate about growing, cooking, eating and talking about chillies.

Salcombe Brewery Co.
Kingsbridge TQ7 4BL
01548 854888

Established in 2016 they have an onsite shop and offer Brewery Tours so you can have the chance to see where their award-winning beers are brewed and of course sample the beers!

Salcombe Dairy Ice Cream
Salcombe TQ8 8DP
01548 843228

All of their products are made locally in their factory on Island Street using only the finest ingredients and fresh milk.

Stokeley Farm Shop
Kingsbridge TQ7 2SE
01548 581605

Stocks everything you would expect from a country farm shop, a deli, butchery, restaurant café & plant centre.

Aune Valley Meats
Loddiswell TQ7 4DA
01548 550413

Renowned for its high-quality local produce and traditional butchery, it's a go-to destination for fresh, locally sourced meats. Shops in Loddiswell and Modbury.

Valley View Café
Loddiswell TQ7 4DA
01548 559126

A little local hotspot for foodie lovers come rain or shine. Enjoy the stunning views from either outside on the terrace or from inside the light and vintage decorated café in a relaxed environment by the friendly team.

The Sloop Inn
Bantham, TQ7 3AJ
01548 560489

Rooted in tradition and history, this 14th-century inn offers you a chance to relax in the beautiful and unspoilt South Hams Area of Outstanding Natural Beauty. All just a stone's throw from Bantham beach.

The Village Inn
Thurlestone, TQ7 3NN
01548 560382

Bags of character and delicious gastropub fare, it's not every day you enjoy a pint beneath the beams of wrecked Spanish Armada ships or savour chef's favourites along with a perfectly conditioned pint of craft beer. Dogs welcome.

The Cricket Inn
Beesands, TQ7 2EN
01548 580215

This popular pub dating back to 1867, is at the heart of the seaside village of Beesands. They have a great reputation for serving modern and delicious seafood dishes. Dogs are welcome in the bar area.

The Start Bay Inn
Torcross, TQ7 2TQ
01548 580553

A family-run business using fresh local produce, real & local ales, local ciders and friendly customer service to provide the perfect dining experience beside the sea.

FOODIE EVENTS 2026

Kingsbridge Farmers' Market
Every first, third & fifth
Saturday of the month
 Kingsbridge Town Square
 Locally grown fruit and vegetables, scrumptious pies, pasties, bread and cakes, fresh fish and organic meats.

Salcombe Crabfest
3 May
 Various locations in town
 Cookery demonstrations by award winning chefs, crab picking masterclasses, live music, kids activities and much more!

Devon County Show
21 to 23 May
 Westpoint @ Exeter
 Love food, animals, tractors, heavy horses, music, dog shows, gardens, shopping, crafts as well as anything and everything associated with country life in Devon? Then you will LOVE Devon County Show.

Kingsbridge Food & Music Festival
29 - 31 May
 Kingsbridge Town Square
 Delicious, locally-produced food and brilliant live music. It's a party for the people of Kingsbridge and visitors to our beautiful town to celebrate the eclectic mix of incredible tastes and sounds that originate from the area. Enjoy exploring the range of culinary and acoustic treats in this three-day food and music extravaganza, where the streets come alive with flavour, rhythm and a true sense of community.

Flavour Fest
29 - 31 May
 Central Park, Plymouth
 Top street food traders from the South West and UK will all be ready and waiting to serve you the best range of cuisines from all over the world. There's something to satisfy every appetite.

Kingsbridge Show
5 September
 Borough Farm
 A celebration of the best in country living, offering visitors a delightful showcase of agricultural excellence and rural charm. From prize-winning livestock and impressive displays of traditional farming techniques to an abundance of locally grown produce, the event highlights the rich agricultural heritage of the region. The show promises something for everyone and plenty of opportunities to relax and soak up the countryside atmosphere.

Dartmouth Food Festival
23 to 25 October
 Various locations in town
 A tempting mix of delicious regional food and drink, chef demonstrations, workshops, lively food debates and fun for all the family.



WHAT'S ON IN 2026

All events were correct at the time of print, but may be subject to change.

MAY

3 May SALCOMBE CRABFEST SALCOMBE

An excellent opportunity for seafood lovers to get together and crack open some fine tasting crabs. Crabfest has become a vibrant showcase for the local fishing, food, drink and tourism industries at the heart of our unique area. Cookery demonstrations by award-winning chefs, crab picking masterclasses, crab pot making, live music, kids activities and much more!

3 May (TBC) INTERNATIONAL FESTIVAL OF WORM CHARMING BLACKAWTON

A quirky local tradition which lasts throughout the day, raising funds for local causes. Fancy dress is strongly encouraged and prizes are awarded for the best costume.

15 - 17 May DART MUSIC FESTIVAL DARTMOUTH

Three special days with over 100 different acts performing in more than 20 venues around Dartmouth. Enjoy a vibrant mix of music genres, from lively local bands to headline acts, all set against the stunning backdrop of the town.

21 - 23 May DEVON COUNTY SHOW WESTPOINT ARENA, EXETER

A celebration of the best of Devon, featuring livestock displays, local food and drink, crafts and thrilling entertainment.

29 - 31 May FOOD & MUSIC FESTIVAL KINGSBRIDGE

Celebrate local food and music with home-grown producers, restaurants and live tunes on the bandstand. Sample delicious dishes, discover unique treats, and enjoy a lively atmosphere full of music and community spirit. A must for food and music lovers!

JULY

5 - 10 July MERLIN ROCKET WEEK SALCOMBE

A thrilling summer regatta at Salcombe Yacht Club, featuring over 100 top UK sailors in high-speed Merlin Rocket dinghies.

18 - 25 July FAIR WEEK KINGSBRIDGE

Action packed week starting with the crowning of the new Fair Queen. Then a week of Fun Fair, Fireworks, Teddy Bears Picnic, Three-Legged Race, Big Quiz and Dog Show plus Raft Race. It closes with a colourful carnival procession through town. Experience the local community spirit that make it special. Buy your official programme from the Kingsbridge Information Centre.

25th July - 1st August SALCOMBE TOWN REGATTA SALCOMBE

A family-friendly regatta week packed with activities on land and sea for all ages.

26 July TOTNES SHOW BERRY POMEROY

One of Devon's largest and oldest one-day agricultural events, takes place each July at Berry Farm.

AUGUST

2 - 7 August SALCOMBE SAILING REGATTA SALCOMBE

Drawing sailors from near and far to compete in the stunning waters of Salcombe Estuary.

8 - 9 August SOUTH HAMS VINTAGE WORKING RALLY KINGSBRIDGE

Two fun-filled days celebrating heritage, engineering with vintage tractors, cars, lorries and bikes on display. Enjoy crafts, a children's entertainer, tractor & trailer rides and fairground attractions.

12 - 13 August BRITISH FIREWORK CHAMPIONSHIP PLYMOUTH

Top firework teams compete over two nights to light up the sky.

22 - 23 August DARTMOUTH ROYAL REGATTA FAMILY FUN WEEKEND DARTMOUTH

The Dartmouth Royal Regatta Family Fun Weekend is a lively celebration held in Royal Avenue Gardens, marking the start of Regatta week. Packed with family-friendly entertainment.

27 - 29 August DARTMOUTH ROYAL REGATTA DARTMOUTH

A three day packed programme of sailing, sports, live music, street food, fireworks and more in the beautiful town of Dartmouth.

29 - 31 August (TBC) HOPE COVE WEEKEND HOPE COVE

Good old-fashioned family fun from children's races to family sandcastle competitions, live music, food and drink. Enjoy a lively seaside atmosphere with entertainment for all ages, local treats and plenty of opportunities to make wonderful memories by the sea.

SEPTEMBER

5 September KINGSBRIDGE SHOW BOROUGH FARM

A fantastic day out showing classes in horses, cattle, craft, horticulture and pets. Enjoy local food stalls, live demonstrations and entertainment throughout the day. Explore a variety of competitions, meet the animals up close and discover unique handmade crafts from talented local artisans. Don't miss this chance to experience the best of our community's rural traditions! Free bus running from Kingsbridge bus station.

5 - 11 September KINGSBRIDGE FRINGE KINGSBRIDGE

A vibrant celebration of local talent, featuring a diverse range of performances including music, theatre, dance and comedy. Enjoy an exciting mix of shows, workshops and interactive events that bring the community together.

18 - 20 September DARTMOUTH BOOK FESTIVAL DARTMOUTH

Centred around The Flavel Arts Centre, it brings together a vibrant mix of authors, speakers, workshops, talks, performances, celebrating books, ideas and creativity.

19 September VINTAGE BUS RUNNING DAY KINGSBRIDGE BUS STATION

Free services all day to coast and country villages on buses from the 1930s to the 1990s. Get a programme from the KIC.

OCTOBER

2 - 4 October SALCOMBE LIVE SALCOMBE

Showcasing live music, performances and cultural events for all ages and tastes.

23 - 25 October DARTMOUTH FOOD FESTIVAL DARTMOUTH

A delicious regional food and drink, chef demonstrations, workshops, food debates for all the family.

DECEMBER

5 December KINGSBRIDGE CELEBRATES CHRISTMAS KINGSBRIDGE

Get into the festive spirit with stalls along Fore Street selling Christmas treats, gifts and cards. Enjoy a sizzling hog roast, lively carol singers and a special visit from Santa. Bring the whole family to soak up the holiday atmosphere, enjoy seasonal activities and make magical memories in the heart of Kingsbridge.

REGULAR EVENTS

Every 1st, 3rd & 5th Saturday
KINGSBRIDGE FARMERS MARKET
KINGSBRIDGE TOWN SQUARE
Market offering fresh, locally sourced produce, handmade goods and artisanal products. It's a great place to support local farmers and makers while enjoying the vibrant atmosphere and discovering the best of the region's food and craftsmanship.

Every Tuesday & Thursday
KINGSBRIDGE MARKET
KINGSBRIDGE TOWN SQUARE
A bustling hub offering a variety of fresh produce, local goods, and unique finds.

2nd Tuesday of the month
May to September from 6:30pm
QUAYSIDE CLASSICS
KINGSBRIDGE TOWN SQUARE
A showcase of classic cars set against the picturesque backdrop of the quayside. Car enthusiasts and visitors alike can enjoy a day of nostalgia, beauty and craftsmanship, surrounded by the charm of the waterfront.

25 January, 29 March, 31 May, 26 July, 27 September and 29 November from 10am until 1pm
KINGSBRIDGE REPAIR CAFÉ
KINGSBRIDGE CARE HUB
an opportunity to breathe new life into broken items, ask for advice, learn new skills, save items from landfill, chat, drink tea and eat cake in a friendly community space.

Scan the QR code for the most up to date info on all the events in the South Hams.





CELEBRATED EVENTS ACROSS THE SEASONS



Scan the code
for a full listing
of What's On

Please double check dates
and time with the event
organisers or contact us on
info@hellokingsbridge.co.uk
or 01548 853195.

hellokingsbridge.co.uk/events